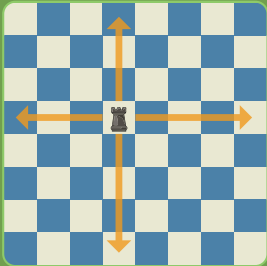


ChessKid

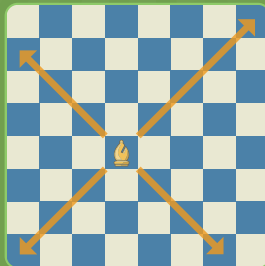
How the Chess Pieces Move

THE ROOK



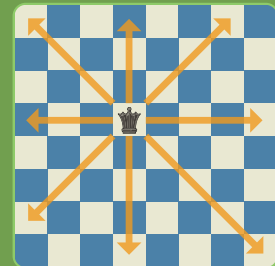
The rook can move as many squares as it likes left or right (horizontal), or up and down (vertical) as long as it isn't blocked. The rook moves like a "+" sign.

THE BISHOP

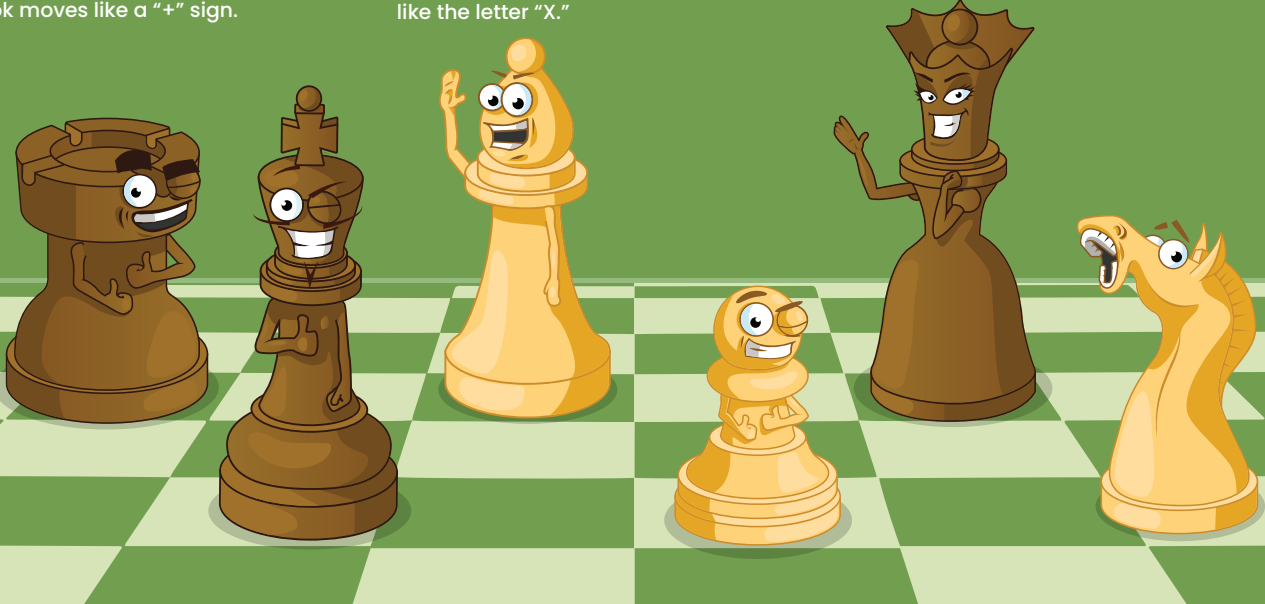


The bishop moves in a diagonal line, as many squares as it likes as long as it isn't blocked by a piece. The bishop moves like the letter "X."

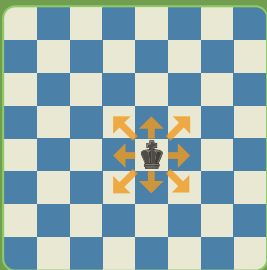
THE QUEEN



The queen moves any number of squares vertically, horizontally or diagonally. She moves like a rook and bishop combined.

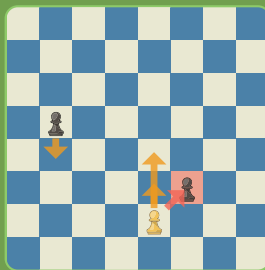


THE KING



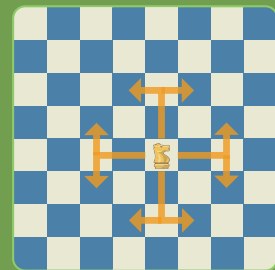
The king is a slow piece. He can only move (or capture) one square in any direction. When a king is attacked, it is called "check." It is the only piece that cannot be captured.

THE PAWN



On the pawn's first move, it can move forward one or two squares. If a pawn has already moved, then it can move forward just one square at a time. Pawns capture diagonally one square.

THE KNIGHT



The knight moves in a "L" shape, two squares in one direction, and then one square in the other direction. Knights are the only pieces that can jump over other pieces.

