

Illegal Chess Moves

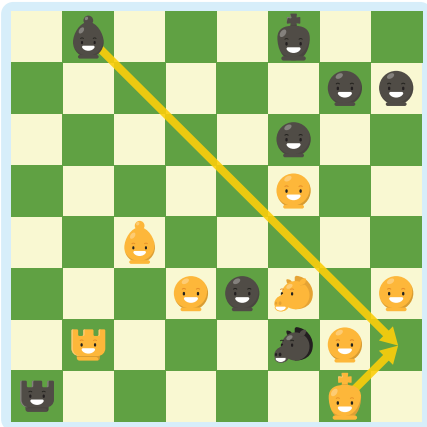
1

Chess is a fascinating game that people of all ages play around the world. In the magical world of chess, there are some strict rules to follow.

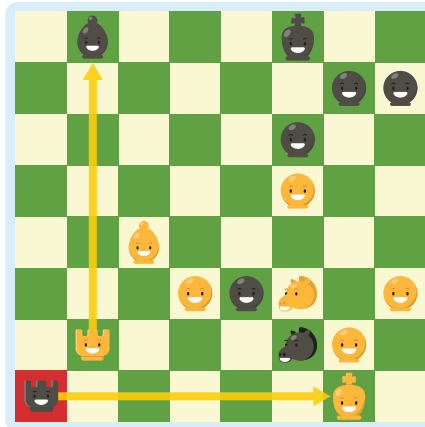
Illegal King Moves:



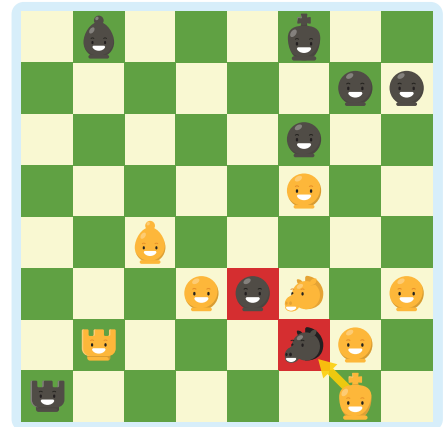
Moving the king into check.



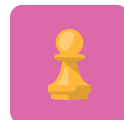
Not protecting the king when attacked.



Capturing a protected piece with the king.



Illegal Pawn Moves:



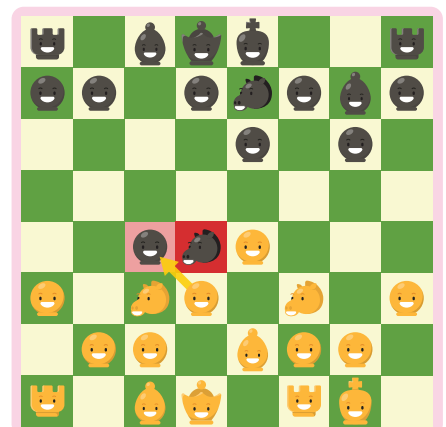
Moving a pawn two squares when not in its initial position.



These pawns have the right to move one or two squares.



Capturing in a straight line instead of diagonally.



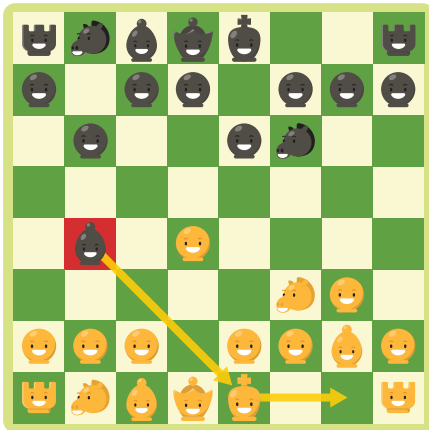
Illegal Chess Moves

2

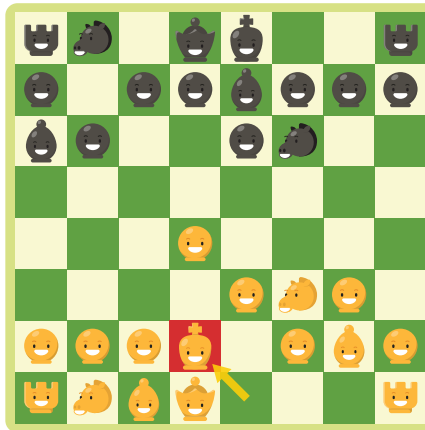
Castling:



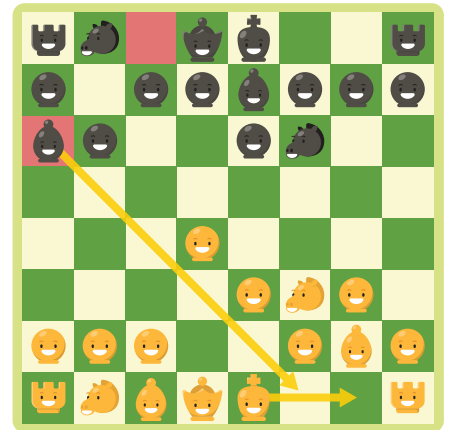
Castling when the king is in check.



Castling when the king or rook has already moved.

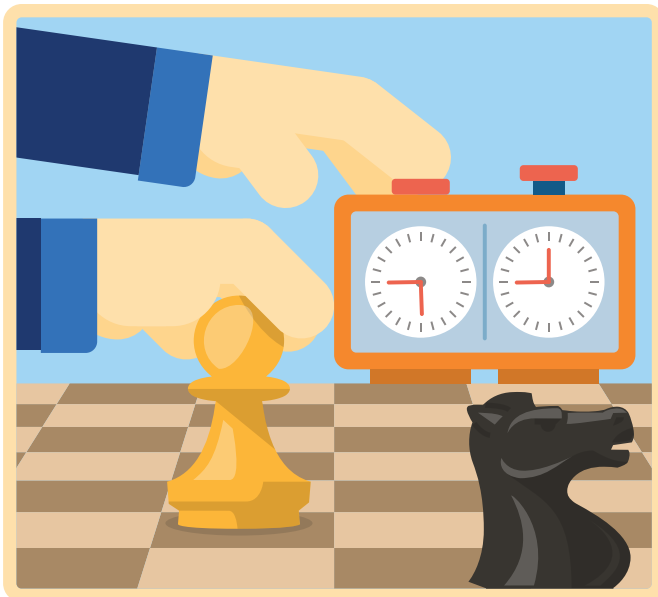


Castling when the king passes through a checked square.



Other Illegal Chess Moves:

Moving a piece with one hand and pressing the clock with the other.



Using two hands for any chess moves.

